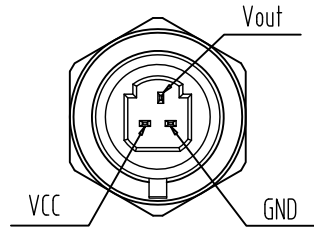
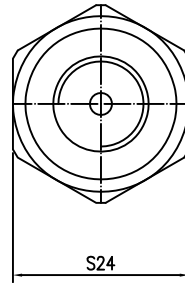
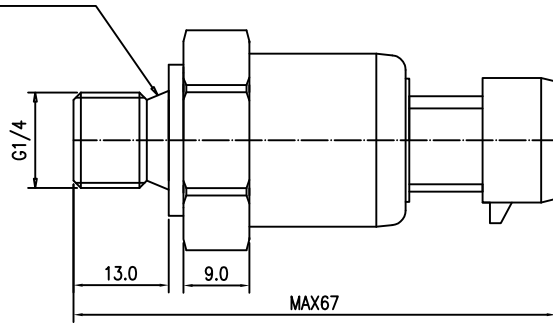


# Dimensions :

With special G1/4 combination sealing gasket



# Electrical Characteristics :

1. Supply voltage:  $5 \pm 0.25$  VDC
2. Supply current: 10 mA MAX
3. Work stress: 0~30 MPa
4. Output voltage: 0.5~4.5 VDC@5V
5. Operating temperature:  $-20 \sim 105^{\circ}\text{C}$
6. Room temperature error:  $\pm 1.5\%$ FS
7. Overload pressure: 35 MPa
8. Destruction pressure: 45 MPa
9. Protection level: IP65
10. Over-voltage protection: 16 VDC
11. Reverse connection protection: -16 VDC
12. Measuring medium: Clean, non-corrosive gas

# Output Characteristics :

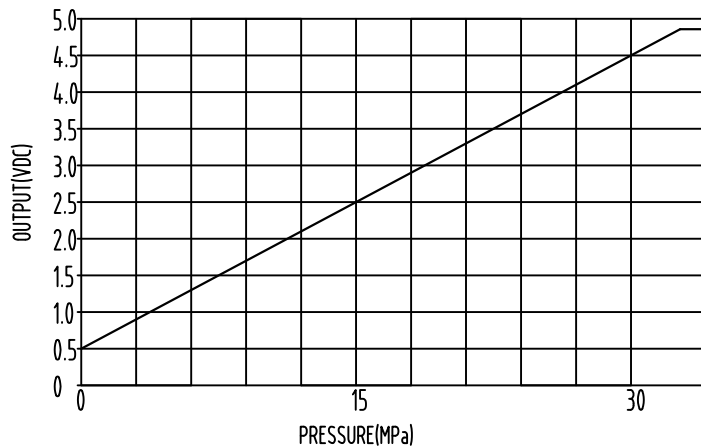
Pressure and output voltage relationship equation:

$$V_{out} = VCC \times (0.026667 \times P + 0.1)$$

$V_{out}$  : output voltage

$VCC$  : Supply voltage 5V

$P$  : Input pressure, Unit: MPa



注 释 :			
编 制 日期	LINGYUANJIANG	如无特殊说明, 尺寸为毫米mm为单位, 角度以度° 为单位	
校 对 日期		压 力 传 感 器 PRESSURE SENSOR	
审 核 日期			
批 准 日期		尺 寸 A4	规 格 HK12-P105F
		重 量	版 本 1.0
		比 例 2:1	页 码 1 / 1