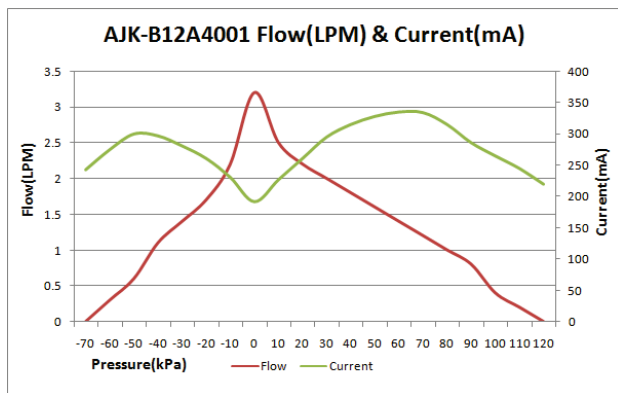
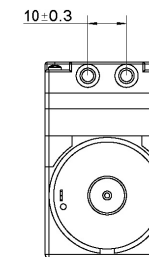
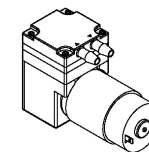
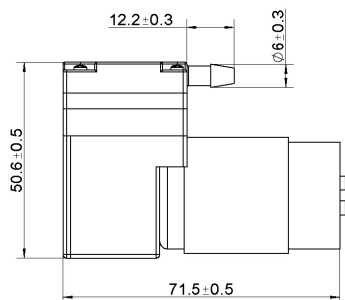
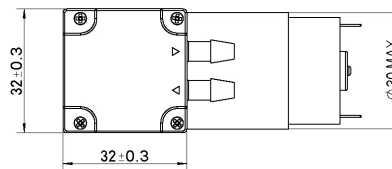
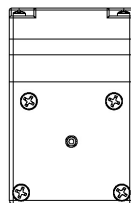
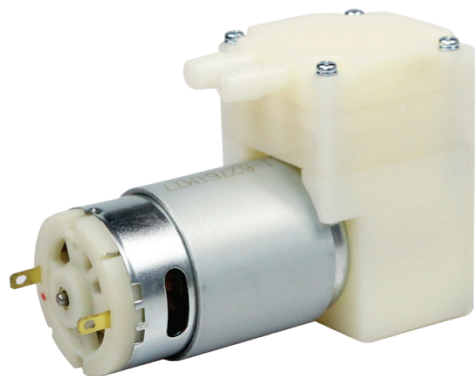


Pump

12V DC 4L/min



## Product Specification

Rated Voltage	Rated Current	Free Flow	Pressure	Noise	Load
DC 6.0 V	< 700 mA	> 3.5 LPM	-60~110 KPa	< 65 dB	Air & Vacuum
DC 12.0 V	< 450 mA	> 3.5 LPM	-60~110 KPa	< 65 dB	Air & Vacuum
DC 24.0 V	< 250 mA	> 3.5 LPM	-60~110 KPa	< 65 dB	Air & Vacuum